

**FLUKE®**

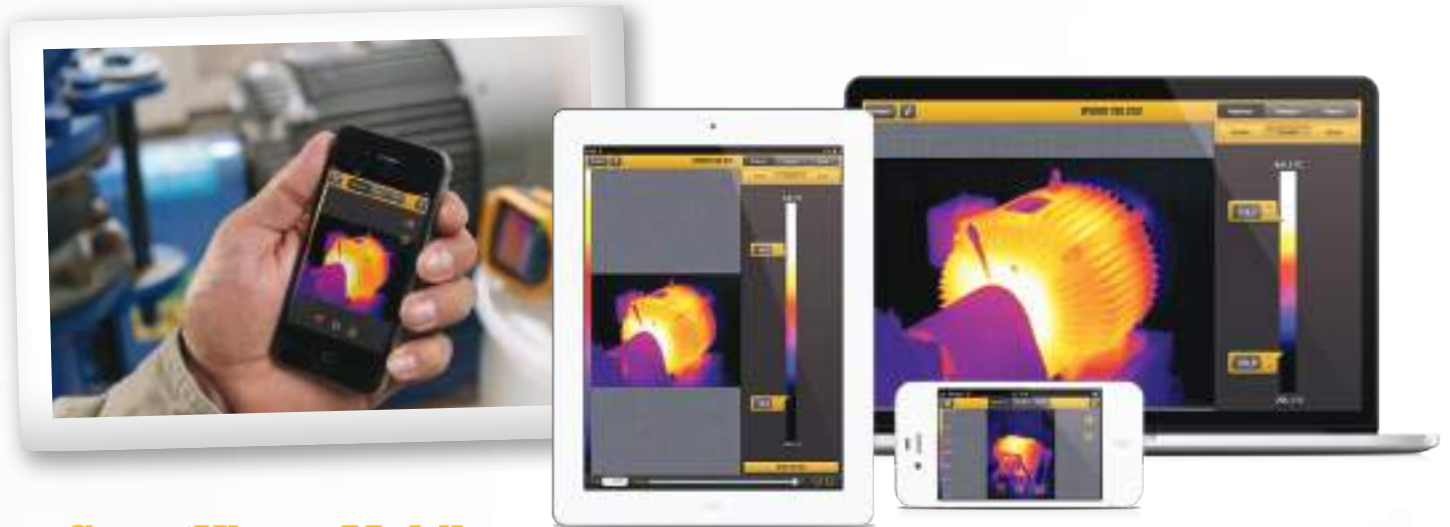
**Reliability matters.  
Image quality matters.  
Performance matters.**

**UPTIME OR DOWNTIME  
YOUR RESULTS MATTER**



# YOUR WORLD. YOUR TOOLS. CONNECTED.

Sending a comprehensive report to a supervisor's or customer's mobile phone... Analyzing and reporting from the field without having to go back to the office... Multiple tools that report to you simultaneously... This is the world of SmartView® Mobile app and CNX™ Wireless System. Available only from Fluke—where your results matter.



## SmartView® Mobile

- Frees you from having to leave the site to send images and/or reports
- Send reports wirelessly when they're needed, where they're needed
- Complete more inspections in a day
- On-site analysis
- Get instant feedback from others or next steps approved immediately
- Real-time report previewing— instant gratification
- User interface is optimized for each mobile device (iOS, iPhone® and iPad®)



## Fluke CNX™ Wireless System

- Capture up to five additional measurements with CNX wireless modules
- Multiple tools report to your CNX enabled Fluke infrared camera
- Quicker readings means less time finding problems and more time solving them
- Capture measurements from as far as 20-meters away
- The list of Fluke test tools that can connect wirelessly continues to grow



# FOCUS is the single most important thing to ensure when conducting an INFRARED INSPECTION.



Many inspection sites are difficult for certain auto focus systems



Passive auto focus systems often only capture the near-field subject, in this case the chain link fence



Fluke LaserSharp™ Auto Focus clearly captures what you want to inspect. Every. Single. Time. The red dot from the laser confirms what the camera is focusing on.



**Without an in-focus image, temperature measurements may not be as accurate (sometimes as much as 20 degrees off) and you could miss a problem.**

Fluke provides customers with two superior focusing solutions—LaserSharp® Auto Focus (see page 5) and IR-OptiFlex™ Focus System (see page 7) and still gives you the flexibility of using manual if you wish.

## ACCURACY MATTERS

Ti400  
Ti300  
Ti200



Ti400



Ti300



Ti200

Optimized for Industrial, Electrical and Building Applications

## A new generation of tools with next generation performance.

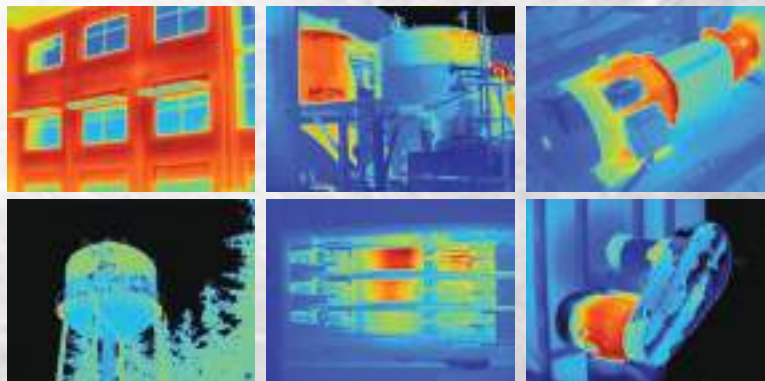
Technology changes. The last thing we want is for you to feel like you're missing out on critical innovations, so Fluke has engineered all three new infrared cameras to adapt to change. Being future-ready is part of their DNA. You can test and measure with wireless speed and ease, and connect with other wireless devices. If there's an infrared camera in your future, make sure it's one *with* a future.



**Fluke introduces the only infrared cameras with LaserSharp™ Auto Focus for consistently in-focus images.**

**EVERY. SINGLE. TIME.**

Your confidence level is about to go up a notch. With precision laser technology, you can focus on your target with pinpoint accuracy and know you're getting the correct image and temperature measurements you need. Troubleshooting has never been easier. This isn't hit-and-miss technology. This is point-and-shoot-and-get-it-right every single time performance.



**SIMPLICITY MATTERS**

- Ti125
- TiR125
- Ti110
- TiR110
- Ti105
- TiR105
- Ti100



**Industrial/Electrical**

**Building Applications**

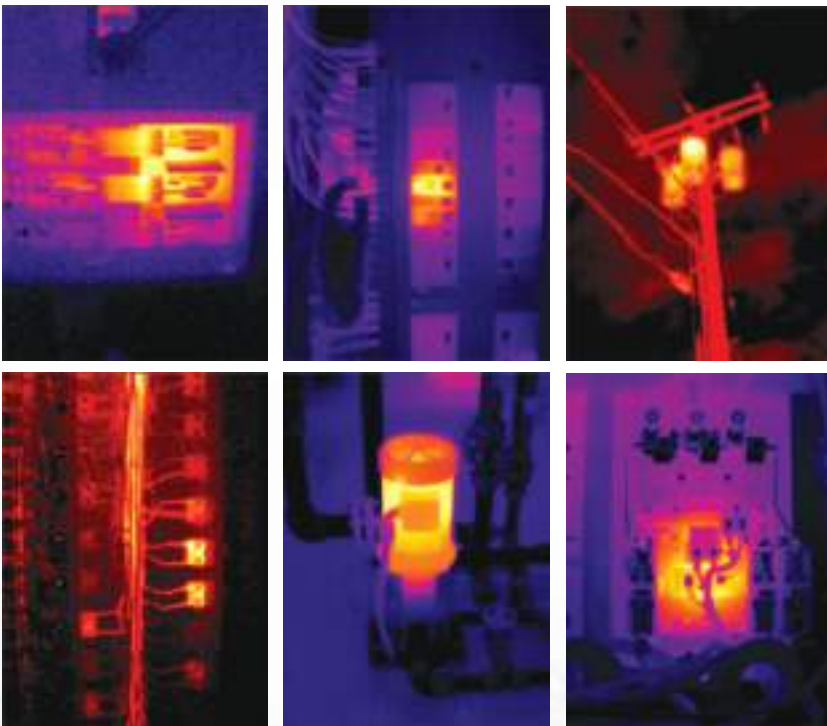
**Fluke innovation makes it easier to do more in less time.**

**IR-PhotoNotes™ Annotation System**

Get an exact reference to your problem area by capturing multiple photos per file. Add images of equipment, motor nameplates, workroom doors or any other useful or critical information.

**Multi-mode video recording**

Troubleshoot with the industry's only infrared camera that offers the proprietary IR-Fusion® Technology and records focus-free video in visible light and infrared. Monitor processes over time, easily create infrared video reports, and troubleshoot frame-by-frame. Easily download to PCs for video viewing and analysis.



# EASY TO CHOOSE. EASY TO USE. HARD TO BEAT.

When you're budget-conscious (and who isn't these days?), the fact that you can get Fluke quality at an affordable price means you can breathe a sigh of relief. At Fluke, 'affordable' doesn't mean sacrificing quality to give you a lower price. It means we've found a way to give you the most camera for your money. In this case, a suite of the lightest, most rugged, easiest-to-use professional infrared cameras you can buy.

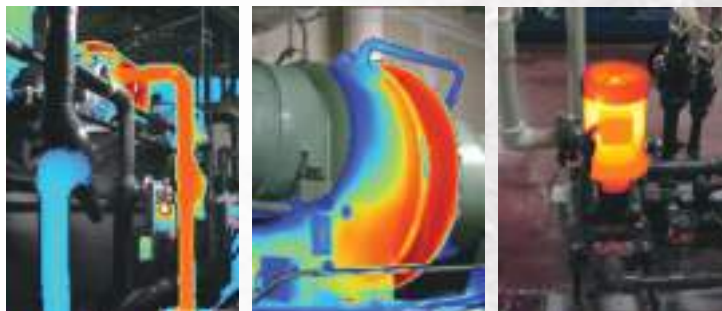


## Electronic compass

Make sure you and others know the location of the problem. Compass readings easily appear in images and reports.

## IR-OptiFlex™ Focus System

Discover issues significantly faster with Fluke's revolutionary, ultra-rugged focus system. The IR-OptiFlex™ Focus System gives you optimum focus by combining focus-free ease-of-use with the flexibility of manual focus on the same camera!



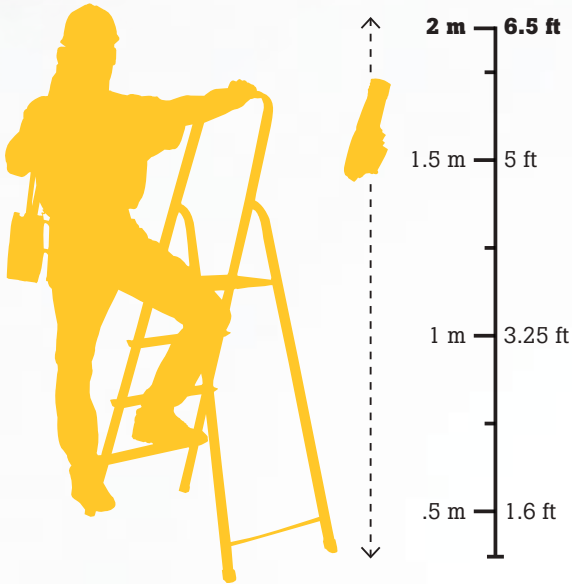
## IR-Fusion® Technology

Enjoy the industry's only point-and-shoot IR-Fusion infrared cameras that provide five different user-selectable modes for greater clarity. Our patented technology blends digital and infrared images into a single image to precisely document problem areas. Fluke exclusive AutoBlend™ Mode generates a partially transparent image to make problem detection and communication fast and easy.

## Rugged one-hand operation

Experience the most rugged and reliable, lightweight professional infrared camera around. One-touch focus, laser pointer, and torch. Point-and-shoot simplicity and the ergonomic design details that matter.

# For more than 65 years, Fluke is Designed better. Built tougher.



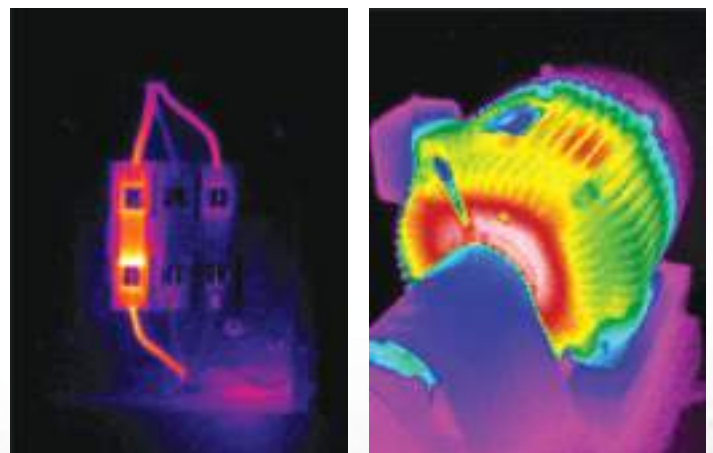
## Legendary ruggedness and reliability

Fluke has earned their reputation as a tool of choice for electrical, industrial and building professionals. Whatever the job and wherever you work, when there's a Fluke infrared camera in your hand, you're prepared for the worst and ready to do your best. Fluke infrared cameras are designed to withstand a 2 meter drop (6.5 ft) and engineered to resist water and dust (IP54 Rating) so that your camera works without compromise.



## Superior image quality

There's a reason Fluke is so passionate about image quality. Clearer, cleaner, crisper images result in better information and more informed solutions. The better the image, the better you look when you show the images to your managers and customers. Our newest models of infrared cameras are the only ones where you can find IR-Fusion® Technology and LaserSharp™ Auto Focus. The Ti400, Ti300 and Ti200 also come fully loaded with a 5 MP digital camera, a HDMI video output, and a 640x480 high resolution LCD display.





# how QUALITY IS MEASURED

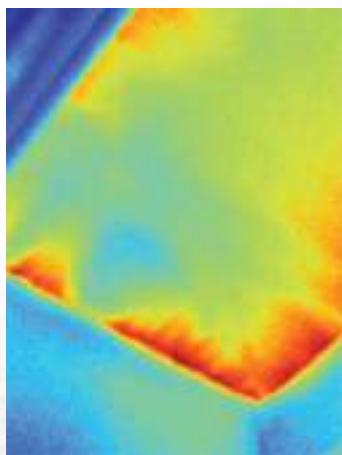
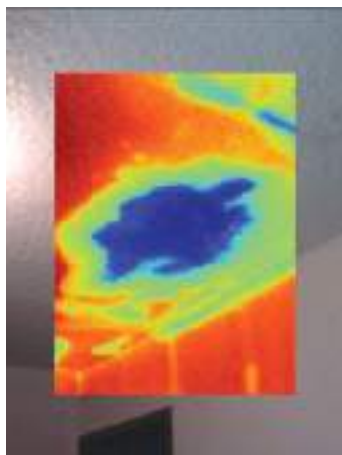
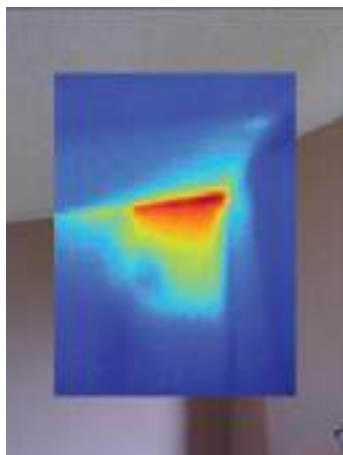
## Because your results matter™.



### Innovation that works for you

Fluke engineers know you're not interested in the bells and whistles other manufacturers like to tout, so they focus solely on features you really need to help you work better, faster, and smarter.

The groundbreaking features that you've come to know, like IR-Fusion® Technology, AutoBlend™ Mode, voice annotation, IR PhotoNotes™ Annotation System, and now LaserSharp® Auto Focus help you get better results faster and easier. Get into the best position possible to get the results that matter to you and your customers with SmartView® Software and SmartView® Mobile.



### Ease of use

Our customers would rather spend time preventing and solving issues—not figuring out how their infrared camera works. We've gained a few other insights after spending thousands of hours in the trenches with them. That time and knowledge has allowed our engineers to develop breakthroughs in design, like buttons you can use when you're wearing work gloves, and simple-to-use, on-camera functions such as voice annotation, so that you don't have to stop to take notes with pen and paper. More recent innovations include:

- LaserSharp™ Auto Focus to ensure the best focus every single time
- CNX™ Wireless System to allow your CNX test modules to communicate additional measurements to your camera
- IR Fusion® Technology with Auto Blend™ Mode to more easily locate, understand and report what the problem could be
- Connectivity to wirelessly transfer images to your PC, Apple® iPad® and iPhone®

All of these innovations can help you quickly understand what the current state is, create a report, determine next steps or begin a preventive maintenance program; all while the factory and processes are still up and running.



	Ti400	Ti300	Ti200	Ti125
<b>Product Specifications</b>	<b>Optimized for Industrial, Electrical and Buildings Inspections</b>			<b>Opti...</b>
<b>Temperature measurement range (not calibrated below -10 °C)</b>	-20 °C to +1200 °C (-4 °F to +2192 °F)	-20 °C to +650 °C (-4 °F to +1202 °F)		-20 °C to +350 °C (-4 °F to +662 °F)
<b>Detector type</b>	320 x 240 pixels	240 X 180 pixels	200 X 150 pixel	
<b>Thermal sensitivity (NETD)</b>	≤ 0.05 °C at 30 °C target temp (50 mK)		≤ 0.075 °C at 30 °C target temp (75 mK)	
<b>Field of view</b>	24 ° x 17 °			
<b>Spatial resolution (IFOV)</b>	1.31 mRad	1.75 mRad	2.09 mRad	
<b>Customizable logo options</b>	Users can brand their infrared images with a Fluke logo, upload their own company logo or no logo.			
<b>Primary focusing system</b>	LaserSharp™ Auto Focus			IR-OptiFlex™ Fo
<b>Manual focus</b>	Yes			
<b>IR-Fusion® Technology</b>	Yes			
<b>CNX™ Wireless enabled (Available as country certification are approved—notifications made via SmartView® Software)</b>				
<b>Voice annotation</b>	60 seconds maximum recording time per image; reviewable playback on ima			
<b>IR-PhotoNotes™</b>	Yes (5 images)			Yes (3 images)
<b>Wi-Fi® connectivity</b>	Yes, to PC and Apple® iPhone® and iPad®			
<b>Streaming video</b>	Via USB to PC and HDMI to HDMI compatible device			Streaming USB-to-PC video output
<b>Multi-mode video recording</b>	*Yes (fully-radiometric .IS3 and standard MPEG-encoded .AVI)			Yes (fully-radiometric .IS3 and standard MPEG-encoded .AVI)
<b>8-point cardinal compass</b>	* Yes			Yes
<b>Ruggedized touchscreen display (capacitive)</b>	8.9 cm (3.5 in) diagonal landscape color VGA (640 x 480) LCD with backlight			
<b>Software</b>	SmartView® full analysis and			
<b>Warranty</b>				

Download the technical data sheet for more detailed information.



Ti110		Ti105		Ti100		TiR125		TiR110		TiR105	
Optimized for Industrial and Electrical Inspections						Optimized for Building Inspections					
-20 °C to +250 °C (-4 °F to +482 °F)						-20 °C to +150 °C (-4 °F to +302 °F)					
160 X 120 pixels											
≤ 0.10 °C at 30 °C target temp (100 mK)						≤ 0.08 °C at 30 °C target temp (80 mK)					
22.5 °H x 31 °V											
3.39 mRad											
—											
Focus System		Focus-free 1.2 m (4 ft) and beyond				IR-OptiFlex™ Focus System				Focus-free 1.2 m (4 ft) and beyond	
		—				Yes				—	
		—		Yes							
Yes											
Imager		—				60 seconds maximum recording time per image; reviewable playback on imager				—	
		—				Yes (3 images)		—			
—											
		—				Streaming USB-to-PC video output		—			
Yes (Standard MPEG-encoded .AVI)		—		—		Yes (fully-radiometric .IS3 and standard MPEG-encoded .AVI)		Yes (Standard MPEG-encoded .AVI)		—	
Yes		—				Yes		Yes		—	
—											
Reporting software included with free download of SmartView® Mobile app											
2 years, Instrument Care Plans are also available.											

\* Features marked with an asterisk are coming soon in a firmware download from SmartView® software.



## Fluke training

Get additional information and training at the Fluke Training web page. Take advantage of free on-line seminars and for those who seek more advanced training and professional mentoring, contact our Fluke training partner, The Snell Group, the most respected name in infrared education.



## Fluke accessories

Enhance your infrared camera's performance with Fluke accessories. Choose car chargers, additional smart batteries or smart battery chargers to keep you up and running in the field. For special applications select optional lenses, a visor for outside inspections or a tripod mounting accessory.

Fluke also offers specialized instrument Care Plans—ask your Fluke representative or distributor for additional information.



**Fluke Europe B.V.**  
 P.O. Box 1186  
 5602 BD Eindhoven  
 The Netherlands  
 Web: [www.fluke.co.uk](http://www.fluke.co.uk)

**For more information call:**  
 In Europe/M-East/Africa  
 +31 (0) 40 2 675 200 or  
 Fax +31 (0) 40 2 675 222

**Fluke (UK) Ltd.**  
 52 Hurricane Way  
 Norwich, Norfolk  
 NR6 6JB  
 United Kingdom  
 Tel.: +44 (0) 20 7942 0700  
 Fax: +44 (0) 20 7942 0701  
 E-mail: [industrial@uk.fluke.nl](mailto:industrial@uk.fluke.nl)  
 Web: [www.fluke.co.uk](http://www.fluke.co.uk)

©2013 Fluke Corporation. All rights reserved.  
 Data subject to alteration without notice.  
 08/2013 Pub\_ID: 12097-eng

**Modification of this document is not permitted without written permission from Fluke Corporation.**